

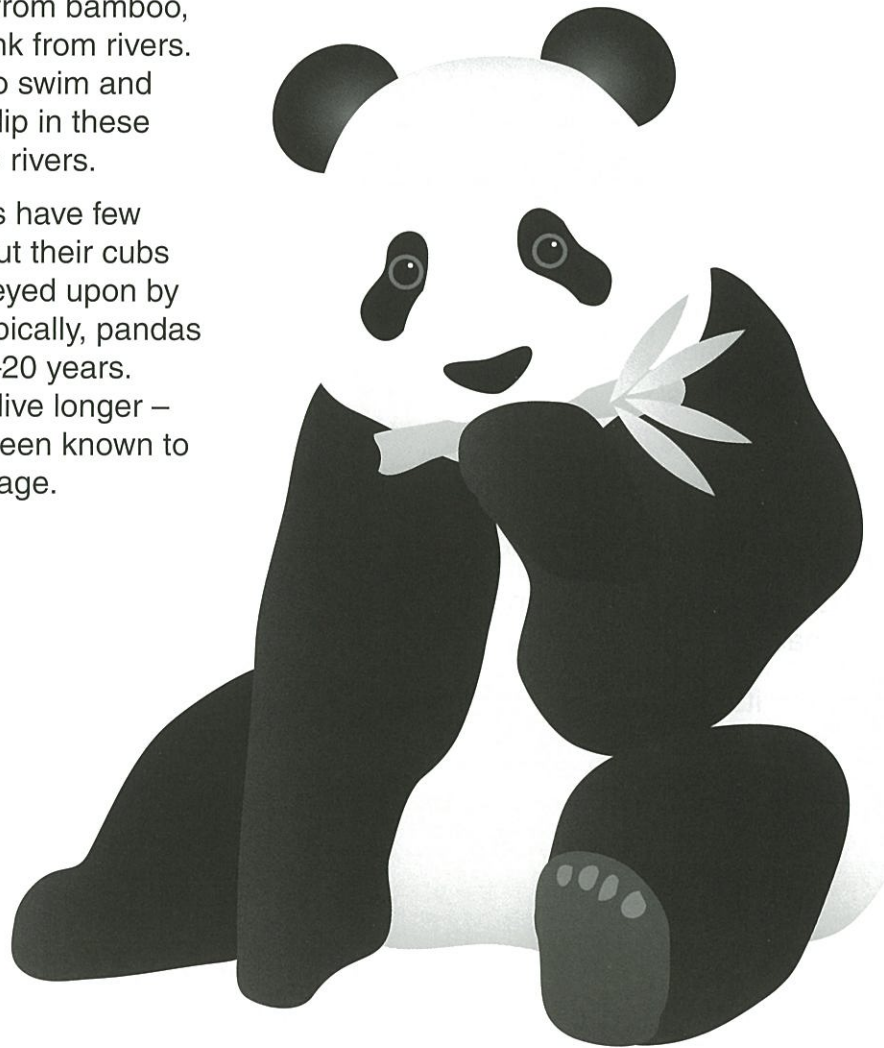
Giant Panda Facts

Giant pandas are black and white bears that live in the mountainous forests of central China. Although scientists do not know why pandas' coats are black and white, they suspect it helps them to blend into the snowy and rocky surroundings.

The panda's scientific name *Ailuropoda melanoleuca* means 'black and white cat-footed animal', but a panda's feet are very different from a cat's. A panda's front paw has a special padded bone which acts a bit like a thumb. This helps the panda grip bamboo shoots as a human would. The panda then crushes the bamboo with its large molar teeth.

A wild panda's diet is almost exclusively bamboo but its stomach is capable of processing meat – occasionally it will eat small rodents. A panda's droppings may contain undigested bamboo, and the unique molar markings on the bamboo make it possible for scientists to identify the panda. Although a panda gets much of its water from bamboo, it still needs to drink from rivers. Pandas are able to swim and they often take a dip in these cold, mountainous rivers.

Adult giant pandas have few natural enemies but their cubs are sometimes preyed upon by snow leopards. Typically, pandas in the wild live 14–20 years. Those in captivity live longer – some have even been known to reach 30 years of age.



- 21 What do pandas eat?
- A meat only
 - B bamboo only
 - C mainly meat but some bamboo
 - D mainly bamboo but some meat
- 22 What reason does the text give for pandas having black and white coats?
- A It helps pandas attract a mate.
 - B It scares away panda predators.
 - C It helps pandas to hide in the mountains.
 - D It makes it easy for pandas to find each other.
- 23 According to the text, which of these is the biggest threat to a panda cub?
- A ice-cold rivers
 - B snow leopards
 - C small rodents
 - D adult pandas
- 24 The text suggests that pandas are similar to people in the way they
- A hold things.
 - B chew food.
 - C swim.
 - D drink.
- 25 How can panda experts tell which panda has been in a particular area?
- A from fur left behind on rocks near the rivers
 - B from paw-prints found on the banks of the rivers
 - C from claw-marks on the bamboo shoots in the forest
 - D from teeth-marks on the bamboo found in panda droppings

Choose the correctly spelt word for each blank space.

Craft Store

I treat each trip to the craft store as an 26. I make a list of items to 27 and I move around the store 28 to make sure I don't forget anything. This month's plans are 29; I'm going to build a 30.

26 Choose the best option for space 26.

- A expedition
- B expediton
- C expertision
- D expardision

27 Choose the best option for space 27.

- A perchise
- B perchase
- C purchase
- D purchise

28 Choose the best option for space 28.

- A methodicly
- B mathodicly
- C muthodicaly
- D methodically

29 Choose the best option for space 29.

- A ambitious
- B ambishus
- C ambishius
- D ambitious

30 Choose the best option for space 30.

- A rocket
- B rokit
- C rokkit
- D rockert



Choose the best option for each blank space.

Skateboard

'Does this skateboard belong to 16 asked Amil.
'No,' said Talia. 'It's 17 skateboard. I'm watching it for him while he's in the shop.'
Amil picked up the skateboard. 'Check out 18 wheels,' he said. 'I'm going to ride it.'
'Stop!' said Talia. 'It's not 19. You shouldn't touch it.'
It was at this point 20 that David returned.

16 Choose the best option for space 16.

- A you?'
- B you'?
- C you?,'
- D you?,

17 Choose the best option for space 17.

- A Davids
- B Davids'
- C David's
- D David's'

18 Choose the best option for space 18.

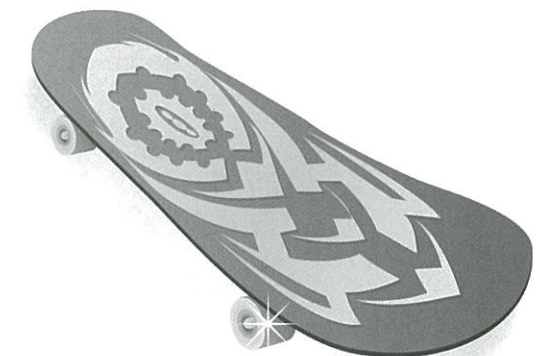
- A its
- B it's
- C its'
- D it's'

19 Choose the best option for space 19.

- A your's
- B yours'.
- C your's.
- D yours.

20 Choose the best option for space 20.

- A luckily?
- B , luckily
- C luckily;
- D , luckily,



Choose the best word(s) for each blank space.

Chocolate

A British study **11** that eating two bars of dark chocolate a week **12** help people do better **13** maths. Eating chocolate can also improve blood **14** and can help to protect skin **15** harmful UV rays.

11 Choose the best option for space 11.

- A was shown
- B was showed
- C has shown
- D has showed

12 Choose the best option for space 12.

- A must
- B shall
- C would
- D could

13 Choose the best option for space 13.

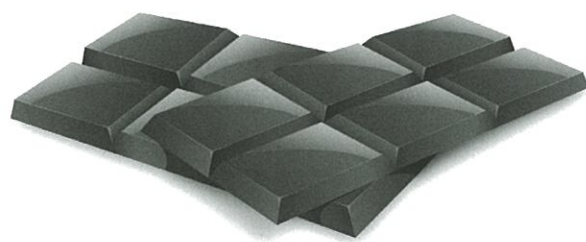
- A at
- B on
- C to
- D for

14 Choose the best option for space 14.

- A circulates
- B circulated
- C circulating
- D circulation

15 Choose the best option for space 15.

- A by
- B with
- C from
- D about



Replace the **bolded** words. The meaning of the text should remain the same.

Empanadas

The empanada is one of the **staple** street foods of South America. To make empanadas you must **combine** pastry ingredients and work this into a dough of the right **consistency**. Each circle of dough should be **stuffed** with meat and onions. Before cooking, fold the circle of dough in half and **dampen** the edges so that the dough sticks together.

31 Select the best word to replace **staple**.

- A tasty
- B main
- C cheap
- D healthy

32 Select the best word to replace **combine**.

- A add
- B buy
- C find
- D blend

33 Select the best word to replace **consistency**.

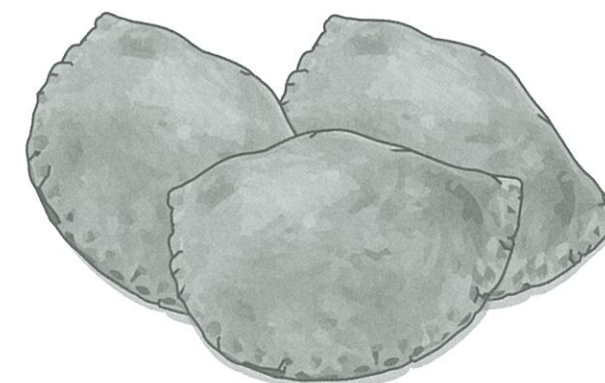
- A shape
- B flavour
- C texture
- D temperature

34 Select the best word to replace **stuffed**.

- A filled
- B roasted
- C covered
- D mixed

35 Select the best word to replace **dampen**.

- A pinch
- B pierce
- C moisten
- D straighten



Driverless Cars

Here is a post from a blog by Tran and a comment from one of his readers, Sally.



You get into your car, you tell it where you want to go, and then sit back, go to sleep, do your work, or do anything except drive the car.

We can't do this yet, but we can expect driverless cars to become available to the general public soon.

Once the technology is perfected, I believe that it would be safer to allow cars to drive themselves than to have humans drive them. Machines can react more quickly, more precisely and much more predictably than humans in any given situation. There will be no drunk driving and no tired drivers falling asleep or reacting too slowly to emergency situations. We won't have careless drivers who can't follow the road rules. Accidents will become things of the past.

I can't wait for the day when I no longer have to concentrate on my own driving or worry about the careless drivers around me.

Comments



Sally

The jury is still out on driverless cars. The idea is a good one, but the programming and sensor technologies are still too slow to be reliable.

Current driverless car systems rely on camera sensors that tell the car's computer what is coming. The computer program then guides the car to its destination, avoiding objects detected by the sensors. Or it tries to, but the sensors can't keep up and the programs can't handle the unpredictable things that cause road accidents.

Driverless cars may eventually reduce the driver errors that happen when a driver becomes sleepy or distracted, but they are still a long way from being able to cope with unexpected movements by pedestrians and cyclists in the same way that human drivers can.

6 What caused ships to greatly increase in size?

- A greater demand for holidays
- B a change in the materials used
- C growth in trade between countries
- D an increase in the skills of ship-builders

7 Why is the *Titanic* mentioned in this text?

- A It sank on its first voyage.
- B It was the first ship made of iron.
- C It was once used as a container ship.
- D It was once the biggest ship in the world.

8 Which of these is the longest ship still sailing today?

- A *Explorer of the Seas*
- B *Emma Maersk*
- C *Seawise Giant*
- D *Pieter Schelte*

9 Why are container ships used instead of planes to transport most cargo?

- A They are safer.
- B They are faster.
- C They are cheaper.
- D They are more reliable.

10 Why are skyscrapers mentioned in the text?

- A People are more familiar with the size of skyscrapers than of ships.
- B Megaships were first created by people who design skyscrapers.
- C Skyscrapers are built with the same materials as ships.
- D Megaships are named after skyscrapers.

Megaships

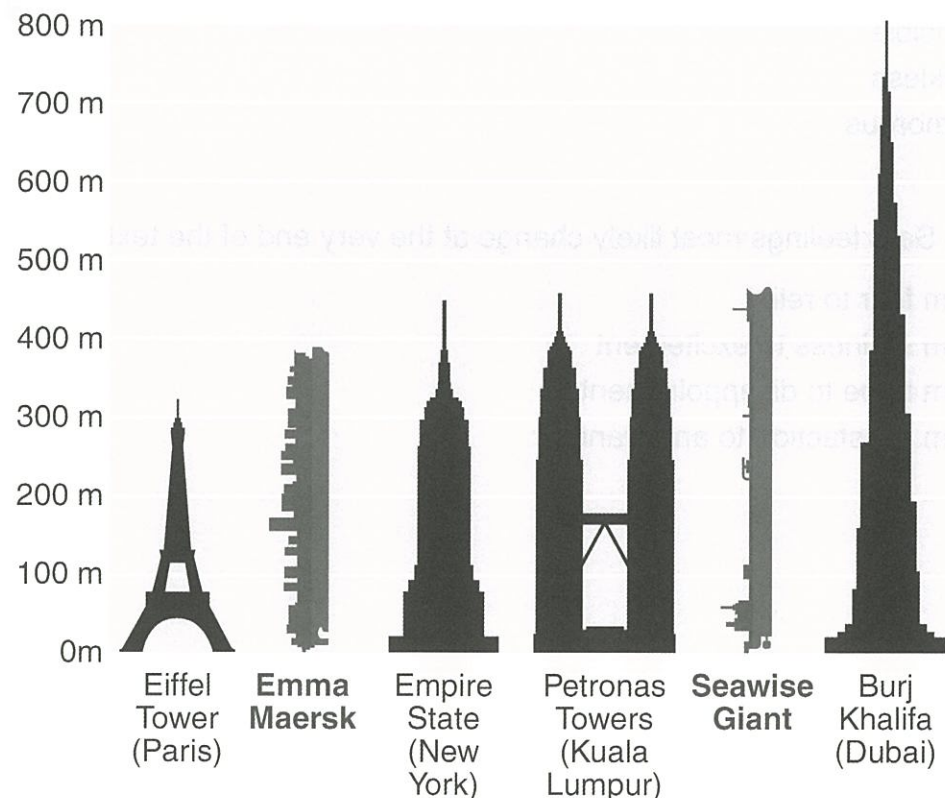
Boats and ships have been used to move people and goods for many thousands of years. The first boat was most likely a simple canoe made from a hollowed-out tree trunk. Indeed, wood was the main material used for boats and ships until about 150 years ago. This is when iron began being used and so ships started to become much, much bigger.

In 1912, the famous *Titanic* became the longest ship ever built. Although it sank on its first voyage, it was an impressive vessel measuring 269 metres in length. In the year 2000, the title of the longest cruise ship was handed to the *Explorer of the Seas*. At 310 metres long, the ship was able to take 3,000 guests on holiday.

The current record holder for the longest ship in active service is the *Emma Maersk*, a container ship that is longer than the height of most skyscrapers. Its anchor alone weighs 29 tons – about the same as five adult African elephants. Container ships are used to transport cargo all over the world; moving goods long distances by rail and air can be too expensive.

But the *Emma Maersk* is not the longest ship ever built. This title goes to an oil tanker called *Seawise Giant*. At 458 metres long, it was about the same size as five football pitches placed end to end. In 2009, after 30 years of service, the ship was sailed to India to be broken up as scrap.

Megaships are constructed for other purposes too. Aircraft carriers are built to carry fighter jets into war zones, and the *Pieter Schelte* was designed to carry oil rigs out to sea. The company responsible for this monster-sized oil rig transporter has started construction on an even longer ship, so the *Emma Maersk* won't hold onto its record for long.



- 36 Why did Tran write his blog?
- A to argue that driverless cars will improve road safety
 - B to warn people about the dangers of driverless cars
 - C to tell his readers that he is making a driverless car
 - D to report on the experiences of people who have used driverless cars

- 37 What is Tran doing in the opening sentence?
- A listing the advantages of driverless cars
 - B highlighting the dangers of using a driverless car
 - C describing a fantasy situation about driverless cars
 - D recalling a recent experience of travelling in a driverless car

- 38 *The jury is still out on driverless cars.*

What does Sally mean?

- A Driverless cars should only be used indoors.
- B It is not clear whether driverless cars are safe.
- C The public do not want to buy driverless cars.
- D The use of driverless cars has increased the number of car accidents.

- 39 Which statement is Sally most likely to agree with?

- A Sensors used in driverless cars need improvement.
- B Driverless cars are more reliable than humans.
- C People should stop learning how to drive cars.
- D Developing driverless cars is a waste of time.

- 40 Which word best describes how Sally feels about driverless cars?

- A enthusiastic
- B cautious
- C amused
- D curious

This page has been deliberately left blank.

- 1** In the first paragraph, what does Sal regret?
 - A attempting to climb Kanu mountain
 - B inviting Yazi to climb with her
 - C continuing the journey alone
 - D waiting for the mist to clear

- 2** Before the climb, what does Sal think about the Blind Beast of Kanu?
 - A She does not believe it is real.
 - B She is worried it will attack her.
 - C She expects that it will leave her alone.
 - D She is convinced she can fight it with Yazi's help.

- 3** Why does Sal take the steeper path?
 - A to show Yazi how strong she is
 - B to beat her friend to the summit
 - C to avoid the Blind Beast of Kanu
 - D to get to the peak before the rain starts

- 4** Which word best describes Yazi?
 - A lazy
 - B sensible
 - C reckless
 - D humorous

- 5** How will Sal's feelings most likely change at the very end of the text?
 - A from fear to relief
 - B from sadness to excitement
 - C from hope to disappointment
 - D from satisfaction to annoyance

Kanu Mountain

When the mist swept in from above the ridge, Sal lost sight of the path she was following. A mild panic set in. She would wait for the mist to clear. She called out to Yazi ... Silence. She was now regretting taking the steep route and leaving her friend behind. But the lure of the summit was just so tempting. Tempting, that was, until she heard the loud howling.

The children in the village had warned Sal about the Blind Beast of Kanu. It supposedly lived in a cave on the mountain. "It will sniff you out. It will lick you with its tongue. And if you move, it will eat you!" they had sniggered. But Sal knew this was nothing more than a foolish tale, the sort of rubbish that could be found in silly old children's stories. And she would climb the mountain to prove it. And she would make Yazi come with her, just in case.

The first part of the climb had been free of drama. With their pockets full of snacks they had set off in bright sunlight and had made good progress. But by lunchtime it all changed. The wind picked up and the light rain had made the rocks slippery. Yazi had begun to struggle – perhaps it was all the extra stuff that was slowing her down: water, food, blanket, torch, hat, extra water, extra food, extra blanket ... Yazi was such a worrier, she would never need those things.

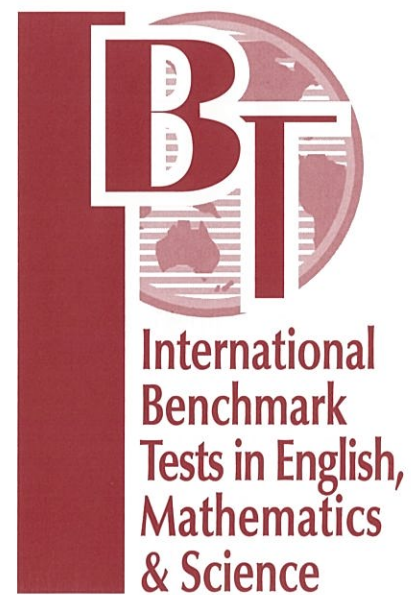
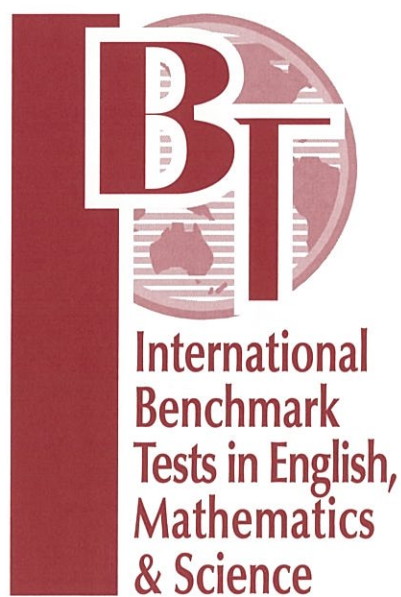
"Come on," cried Sal, "we need to get to the summit before it starts to pour down." And with that she had taken the steep route, hoping her friend would follow. Then she put her head down and forged ahead, and forgot all about Yazi until the eerie mist and the ear-piercing howling.

When the mist cleared, the rain came. So when Sal saw a small crack in a rock face, she rushed straight for it. She squeezed through the crack and it opened up to a large, dark cave. But what was that noise? There was something moving in the darkness. Sal's heart thumped and thudded. Was this the home of the Blind Beast of Kanu? Sal dared not move. Not even a twitch.

Then there was a light. It came from a torch. "What took you so long?" asked a familiar voice. "Come and sit down here, out of that howling wind. I've got a spare blanket for you if you're cold."



This page has been deliberately left blank.



GRADE 5

2015

English

STUDENT NAME _____

NAME OF SCHOOL _____

TEST INSTRUCTIONS

FILL IN YOUR DETAILS

Turn to your ANSWER SHEET and fill in your name, school, grade, section, today's date, your date of birth and gender.

ANSWERING QUESTIONS

Go to the ENGLISH ANSWER SHEET.

This test has **40 QUESTIONS**. Each question has four possible options.

Choose the **BEST** answer from the four options, **A, B, C** or **D**.

FILL in **ONE** circle on your answer sheet with a pencil.

If you make a mistake, erase the pencil mark and fill in a different circle.

You must colour the entire circle as shown below:

Correct response



Incorrect responses



Line



Very light pencil



Pen



Colored pencil

Marks are NOT deducted for incorrect answers.

ALL ANSWERS SHOULD BE MARKED ON YOUR ANSWER SHEET ONLY.

EQUIPMENT ALLOWED IN THIS TEST

You may use a 2B or B pencil for this test. You may NOT use a dictionary for this test.

TIME ALLOWED FOR TEST

The time allowed to complete this test is **60 minutes**.